

Sōtatsu: Making Waves 宗達: 創造の波

October 24, 2015–January 31, 2016

In October 2015, the Freer Gallery of Art and Arthur M. Sackler Gallery, the national museums of Asian art in Washington, D.C., will be the only venue for the first major exhibition in the Western hemisphere of Tawaraya Sōtatsu (ca.1570–ca.1640), a fountainhead of revered Japanese painting and design and one of the most influential yet elusive figures in Japanese culture. Sōtatsu's work is instantly recognized: its bold abstracted style, lavish swaths of gold and silver and rich jewel tones launch his elegant creations into the pantheon of Japanese art history.

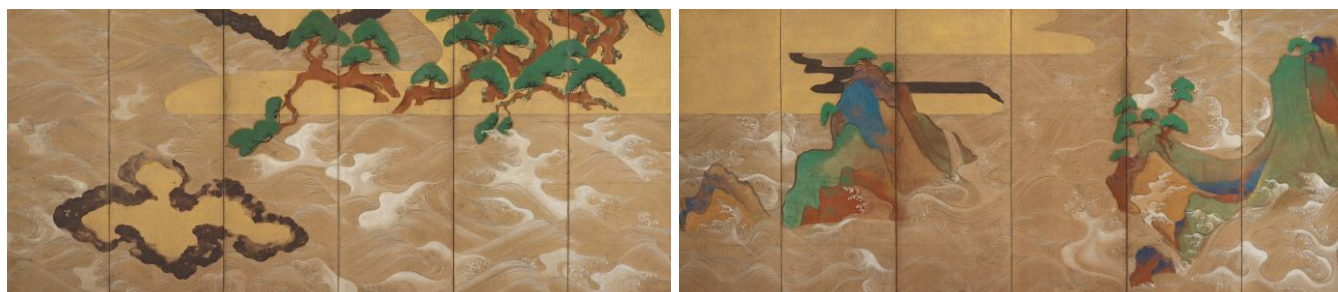
Partial use, changing, cropping, or trimming are not permitted.

- The licensed image(s) must not be overlaid with text or other images.
- For website, a low-resolution image (not exceed 72 dpi, 400 x 400 pixel) should be used.
- The cryptographic protection must be used to protect data on websites.
- A credit line must accompany the licensed image(s) citing the artist, the title of the work, the name of the collection and other specified credits.

使用に際しては、下記にご留意ください。

- 作品画像の一部削除、もしくは文字を重ねるなど、作品画像の加工・改変をしないこと
- ホームページ掲載に当たっては、解像度 72dpi、400x400 ピクセル以下とすること
- また、コピーガードを施すこと
- 所蔵者の名称を明示すること

INTRODUCTION はじめに



Waves at Matsushima

松島図屏風

Tawaraya Sōtatsu (act. ca. 1600–40)

Japan, Edo period, early 1600s

Pair of six-panel folding screens; ink, color, gold, and silver on paper

166 x 369.9 cm (each, overall)

Gift of Charles Lang Freer, Freer Gallery of Art,

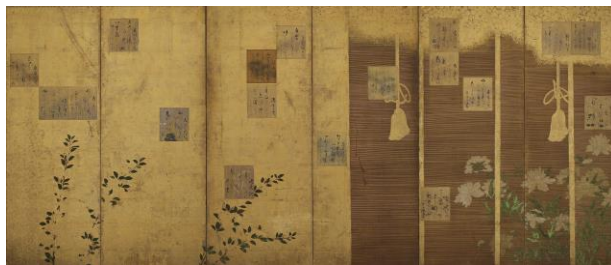
F1906.231-232

Office of Public Affairs and Marketing
Freer Gallery of Art and Arthur M. Sackler Gallery



FREER | SACKLER
THE SMITHSONIAN'S MUSEUMS OF ASIAN ART

ARTISTIC DIALOGUES 美の語らい



Folding Screens Mounted with Poem Cards from the Shinkokin wakashū (New Anthology of Poems Past and Present)

新古今集和歌色紙貼付屏風

Tawayara Sōtatsu (act. ca. 1600–40)

Hon'ami Kōetsu (1558–1637), calligrapher

Japan, Edo period, ca. 1624–37

Pair of six-panel folding screens; ink, colors, and gold on paper

168.2 × 375.7 cm (.195) 168.2 × 377.2 cm (.196)

Gift of Charles Lang Freer, Freer Gallery of Art, F1902.195-196



Poem Cards with Designs of Flowering Plants of the Four Seasons

四季草花下絵和歌色紙帖

Tawayara Sōtatsu (act. ca. 1600–40)

Hon'ami Kōetsu (1558–1637), calligrapher

Japan, early 1600s

Set of 36 cards, 18.3 × 16.2 cm (each)

Gift of Gustav Jacoby, © Museum für Asiatische Kunst der Staatlichen

Museen zu Berlin, 0243

Photo: Jurgen Liepe



Poem Scroll with Design of Deer

鹿下絵和歌巻

Tawayara Sōtatsu (act. ca. 1600–40)

Hon'ami Kōetsu (1558–1637), calligrapher

Japan, 1610s

Handscroll; ink, gold and silver on paper

34.1 × 930.1 cm

Gift of Mrs. Donald E. Frederick, Seattle Art Museum, 51.127

Photo: Seiji Shirono, National Institute for Cultural Properties, Tokyo



Poems from the Shinkokin wakashū (New Anthology of Poems Past and Present) with the Design of Mehishiba Grass and Lions

唐獅子木版下絵和歌巻

Tawayara Sōtatsu (act. ca. 1600–40)

Hon'ami Kōetsu (1558–1637), calligrapher

Japan, early 1600s

Handscroll; ink, gold, and silver on paper

23.2 × 346.6 cm (overall)

© The Cleveland Museum of Art, John L. Severance Fund, 1966.118



Poems from the Kokin wakashū

古今集和歌巻

Tawayara Sōtatsu (act. ca. 1600–40)

Hon'ami Kōetsu (1558–1637), calligrapher

Japan, Momoyama or Edo period, early 1600s

Handscroll; ink, gold, silver, and mica on paper

33 × 1021.7 cm (overall)

Gift of Charles Lang Freer, Freer Gallery of Art, F1903.309



Poem Card with Underpainting of Cherry Blossoms

桜下絵和歌色紙

Tawayara Sōtatsu (act. ca. 1600–40)

Hon'ami Kōetsu (1558–1637), calligrapher

Japan, 1606

Poem card mounted as a hanging scroll; ink, gold, and silver on paper

20.2 × 17.8 cm (image); 134.6 × 37.5 cm (overall)

Lent by the Metropolitan Museum of Art, Harry G. C. Packard Collection of Asian Art, Gift of Harry G. C. Packard, and Purchase, Fletcher Rogers, Harris Brisbane Dick, and Louis V. Bell Funds, Joseph Pulitzer Bequest and The Annenberg Fund Inc. Gift, 1975, 1975.268.59



Poem Card from the Shinkokin wakashū (New Anthology of Poems Past and Present) with Design of Pine on a Beach

浜松下絵和歌色紙

Tawayara Sōtatsu (act. ca. 1600–40)

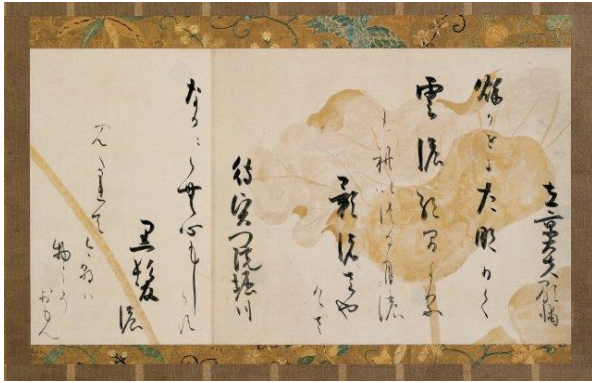
Hon'ami Kōetsu (1558–1637), calligrapher

Japan, 1606

Card mounted on a hanging scroll; gold, silver, and ink on paper

132.1 × 43.2 cm (overall); 20 × 17.4 cm (image)

© The Cleveland Museum of Art, John L. Severance Fund, 1987.60



Two Poems from the Ogura hyakunin isshu

連下絵和歌巻

Tawayara Sōtatsu (act. ca. 1600–40)

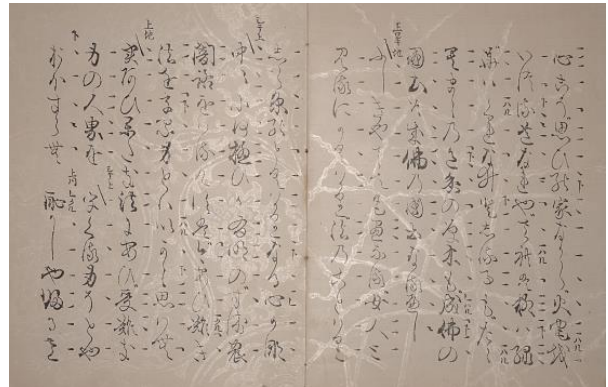
Hon'ami Kōetsu (1558–1637), calligrapher

Japan, ca. 1615

Fragment of a handscroll, mounted as a hanging scroll; ink, silver, and gold on paper

33 × 60.4 cm (image); 126 × 73.9 cm (overall)

Lent by the Metropolitan Museum of Art, Mary Griggs Burke Collection, Gift of the Mary and Jackson Burke Foundation, 2015, 2015.300.85



Kōetsu utai-bon (Nō libretto)

光悦謡本

Tawayara Sōtatsu (act. ca. 1600–40)

Hon'ami Kōetsu (1558–1637), calligrapher

Japan, Edo period, early 1600s

Book with two signatures, woodblock printed; ink on mica-decorated paper

24.2 × 18.1 × 0.4 cm

Purchase—The Gerhard Pulverer Collection, Museum funds, Friends of the Freer and Sackler Galleries and the Harold P. Stern Memorial fund in appreciation of Jeffrey P. Cunard and his exemplary service to the Galleries as chair of the Board of Trustees (2003–2007)

Freer Gallery of Art, FSC-GR-780.98



Kōetsu Sanjūrokkasen (Thirty-six immortal poets)

光悦三十六歌仙

Tawayara Sōtatsu (act. ca. 1600–40)

Hon'ami Kōetsu (1558–1637), calligrapher

Japan, Edo period, 1610 (Keichō 15)

Book, woodblock printed; ink on paper with hand coloring; paper covers with mica and gold leaves

31.5 × 23.9 × 0.8 cm

Purchase—The Gerhard Pulverer Collection, Museum funds, Friends of the Freer and Sackler Galleries and the Harold P. Stern Memorial fund in appreciation of Jeffrey P. Cunard and his exemplary service to the Galleries as chair of the Board of Trustees (2003–2007)

Freer Gallery of Art, FSC-GR-780.97

CLASSIC いにしへの物語



Azusayumi, Tales of Ise, episode 24

伊勢物語色紙 (梓弓)

Tawaraya Sōtatsu (act. ca. 1600–40)

Japan, early to mid-1600s

Poetry sheet mounted, framed and glazed; ink, colors, and gold on paper

24.5 × 21 cm (image); 51 × 41 cm (overall)

Hōshun Yamaguchi Memorial Hall



Carriage and Firefly, Tales of Ise, episode 39

伊勢物語色紙(女車の螢)

Tawaraya Sōtatsu (act. ca. 1600–40)

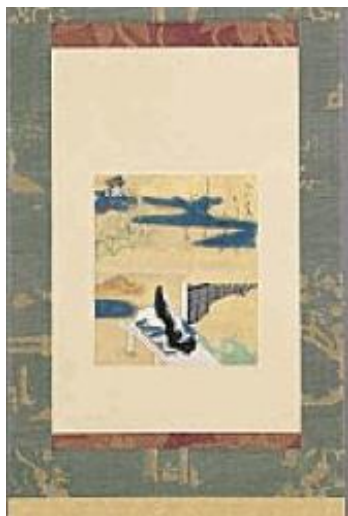
Japan, early to mid-1600s

Poetry sheet mounted as hanging scroll

Ink, colors, and gold on paper

24.3 × 20.9 cm (image); 122.5 × 45.7 cm (overall)

The Walters Art Museum, Baltimore, 35.309



Crossing Mount Tatsuta, Tales of Ise, episode 23

伊勢物語色紙 (立田越え)

Tawaraya Sōtatsu (act. ca. 1600–40)

Japan, Edo period, early to mid-1600s

Poetry sheet mounted as hanging scroll; ink, colors, and gold on paper

23.98 × 20.65 cm (image); 134 × 47 cm (overall)

Gift of the Alliance of the Indianapolis Museum of Art, 2000.61,
imamuseum.org



Musashino, Tales of Ise, episode 12

伊勢物語色紙 (武蔵野)

Tawaraya Sōtatsu (act. ca. 1600–40)

Japan, early to mid-1600s

Poetry sheet mounted as hanging scroll; ink, colors, and gold on paper

24.5 × 20.9 cm (image); 134.7 × 41.8 cm (overall)

Idemitsu Museum of Art, Tokyo



Painted Fans Mounted on a Screen

扇面散図屏風

Tawaraya Sōtatsu (act. ca. 1600–40) and Tōshichirō

Japan, Edo period, early 1600s

Pair of eight-panel folding screens; ink, colors, and gold on paper

111.5 × 376 cm (each, image); 124 × 400 cm (each, overall)

Sannomaru Shōzōkan, Museum of the Imperial Collections, Tokyo



Ivy Vines, Bridges, and Floating Fans

鳶の細道扇面流図屏風

Painter unknown

Japan, early to mid-1600s

Pair of six-panel folding screens; ink, color, gold, and silver on paper

170 × 381 cm (each)

Gift of Charles Lang Freer, Freer Gallery of Art, F1902.102-103



The Beach at Sumiyoshi, Tales of Ise, episode 68

伊勢物語色紙 (住吉)

Tawaraya Sōtatsu (act. ca. 1600–40)

Japan, 1600–40

Poetry sheet mounted as hanging scroll; ink, colors, and gold on paper

24.45 × 20.9 cm (image); 40.6 × 33.2 cm (overall)

© The Cleveland Museum of Art, John L. Severance Fund, 1951.398



Life of Saigyō

西行物語絵巻

Tawaraya Sōtatsu (act. ca. 1600–40)

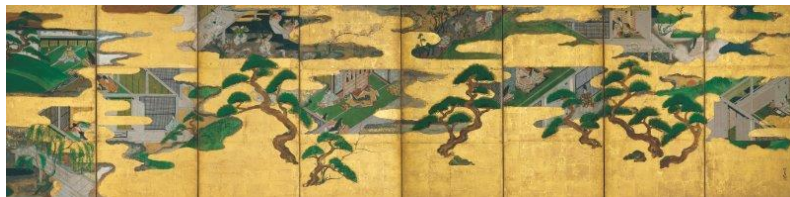
Japan, early 1600s

Two of three handscrolls; ink, colors, and gold on paper

33.4 cm (w)

Agency for Cultural Affairs, Japan

Photo: TNM Image Archives



Nine Scenes from the Tale of Genji

源氏物語図屏風

Tawaraya Sōtatsu (act. ca. 1600–40)

Japan, early to mid-1600s

Eight-panel folding screen; ink, color, and gold on gilded paper

80.65 × 324.49 cm (image)

Minneapolis Institute of Arts, Mary Griggs Burke Collection, Gift of the Mary and Jackson Burke Foundation, L2015.33.1



Screen with Scattered Fans

扇面散図屏風

“Tatō” seal

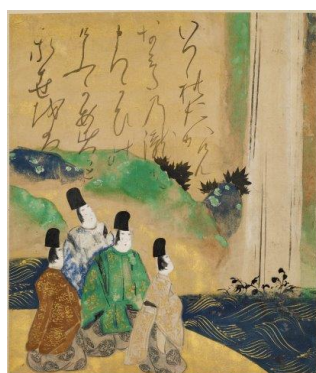
Tawaraya Sōtatsu (act. ca. 1600–40)

Japan, Edo period, early 1600s

Six-panel folding screen; color, gold, and silver over gold on paper

170.6 × 378.6 cm

Gift of Charles Lang Freer, Freer Gallery of Art, F1900.24



Nobles Viewing the Nunobiki Waterfalls, Tales of Ise, episode 87

伊勢物語色紙 (布引の滝)

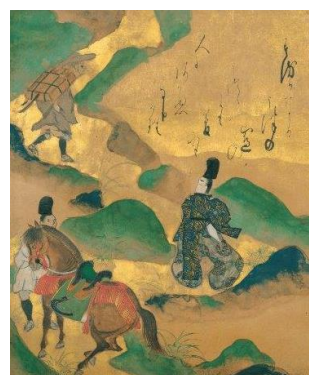
Tawaraya Sōtatsu (act. ca. 1600–40)

Japan, early to mid-1600s

Poetry sheet mounted as hanging scroll; ink, colors, and gold on paper

23.97 × 20.96 cm (image); 132.72 × 40.32 cm (on mount)

Minneapolis Institute of Arts, the John R. Van Derlip Fund, 66.40



Mount Utsu, Tales of Ise, episode 9

伊勢物語色紙 (宇津山)

Tawaraya Sōtatsu (act. ca. 1600–40)

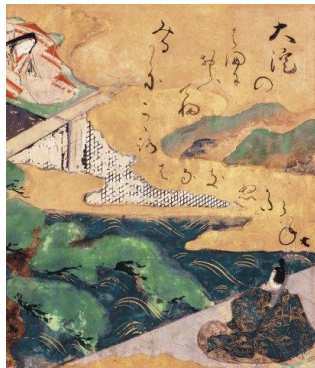
Takeuchi Toshiharu (1611–1647), calligrapher

Japan, ca. 1634

Poem card mounted as hanging scroll; ink, colors, and gold on paper

24.6 × 20.8 cm (image); 125.3 × 42.4 cm (overall)

Lent by the Metropolitan Museum of Art, Mary Griggs Burke Collection, Gift of the Mary and Jackson Burke Foundation, 2015, 2015.300.88



Ōyodo, Tales of Ise, episode 75

伊勢物語色紙 (大淀)

Tawaraya Sōtatsu (act. ca. 1600–40)

Japan, early to mid-1600s

Poetry sheet mounted as hanging scroll; ink, colors, and gold on paper
24 × 21 cm (image); 138.4 × 47.9 cm (overall)

Hosomi Museum, Kyoto



The Sacred Fence, Tales of Ise, episode 71

伊勢物語色紙 (神のいがき)

Tawaraya Sōtatsu (act. ca. 1600–40)

Japan, ca. 1634

Poetry sheet mounted as hanging scroll; ink, colors, and gold on paper
24.4 × 21 cm (image)

The Nelson-Atkins Museum of Art, Gift of Mrs. George H. Bunting, Jr., 74-37

Photo: Jamison Miller

INKWORK すみ色

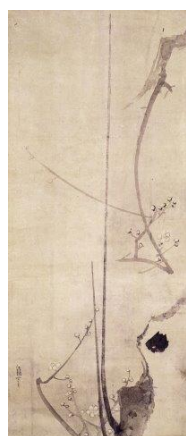


Dragons and Clouds 雲龍図屏風

Tawaraya Sōtatsu (act. ca. 1600–40)

Japan, Edo period, early 1600s, pair of six-panel folding screens; ink and pink tint on paper, 171.5 × 374.3 cm (.229 overall), 171.5 × 374.6 cm (.230 overall)

Gift of Charles Lang Freer, Freer Gallery of Art, F1905.229-230



Plum Tree

墨梅図

Tawaraya Sōtatsu (act. ca. 1600–40)

Japan, early 1600s, hanging scroll; ink on paper; 105.7 × 45 cm (image)

Hosomi Museum, Kyoto



Shamo Chicken

軍鶏

l'nen seal

Japan, early 1600s, hanging scroll; ink and color on paper; 114.7 × 46.5 cm

Private collection



The Zen Priest Chōka

鳥窠和尚図

Tawaraya Sōtatsu (act. ca. 1600–40)

Japan, early 1600s, hanging scroll; ink on paper

95.8 x 38.7 cm (image)

© The Cleveland Museum of Art, Norman O.

Stone and Ella A. Stone Memorial Fund, 1958.289



Dragon and Tiger

竜虎図

Sōtatsu school, I'nen seal

Japan, Edo period, early 1600s

Pair of hanging scrolls; ink on paper

Idemitsu Museum of Art, Tokyo



A Child Holding a Spotted Puppy

童子仔犬図

Tawaraya Sōtatsu (act. ca. 1600–40)

Japan, early 1600s

Hanging scroll (mounted on panel); ink and tint on paper

103.7 x 43.8 cm (image)

Gift of Charles Lang Freer, Freer Gallery of Art, F1902.37



Master Poet Motokata

歌仙絵 在原元方

Tawaraya Sōtatsu (act. ca. 1600–40)

Japan, early 1600s, hanging scroll; ink and color on paper

19.2 x 20.3 cm

Private collection



Sankirai

山帰来図

Tawaraya Sōtatsu (act. ca. 1600–40)

Japan, early 1600s, hanging scroll; ink on paper

100 x 35.5 cm (image)

Tokyo National Museum, Photo: TNM Image Archives

THE I'NEN GARDEN 伊年の苑



Coxcombs, Maize, and Morning Glories

鶏頭玉蜀黍朝顔図屏風

I'nen seal

Sōtatsu school

Japan, Momoyama period, 1568-1615

Two-panel folding screen; color and silver on paper

164.8 x 173.8 cm

Gift of Charles Lang Freer, Freer Gallery of Art, F1903.142



Coxcombs, Maize, and Morning Glories

鶏頭玉蜀黍朝顔図屏風

I'nen seal

Sōtatsu school

Japan, Momoyama period, early 1600s

Two-panel folding screen: ink, colors, gold, and silver on paper

159.3 x 190 cm

Gift of Charles Lang Freer, Freer Gallery of Art, F1901.99



Mimosa Tree, Poppies and Other Summer Flowers

合歡木芥子園屏風

I'nen seal, Sōtatsu school

Japan, Edo period, 1630-1670

Four-panel folding screen; ink, color and gold on paper

167.4 x 353.4 cm

Gift of Charles Lang Freer, Freer Gallery of Art, F1902.92



Trees

雑木林園屏風

Master of I'nen seal, Sōtatsu school

Japan, mid-1600s

Pair of six-panel folding screens. Ink, color and gold on paper

154 x 357.8 cm (each)

Freer Gallery of Art, F1962.30-31



Flowers and Grasses of the Four Seasons

四季草花園屏風

I'nen Seal

Sōtatsu school

Japan, Edo period, ca. 1620-50

Pair of six-panel folding screens; color and ink on gold leaf on paper

160 x 363.2 cm

Asia Society, Mr. and Mrs. John D. Rockefeller 3rd Acquisitions Fund,
1985.001.1-2

Photo: Lynton Gardiner, Asia Society





Summer and Autumn Flowers

夏秋草花図屏風

I'nen seal, Sōtatsu school

Japan, 1600s

Six-panel folding screen; color over gold on paper

181 x 377.9 cm

Gift of Charles Lang Freer, Freer Gallery of Art, F1896.82



Peonies and Lilies

芍薬と百合図

I'nen seal, Sōtatsu school

Japan, late 1600s

Hanging scroll (mounted on panel)

Ink and color on paper

107.9 x 44.1 cm

Gift of Charles Lang Freer, Freer Gallery of Art, F1898.56

LEGACY OF WAVES 受け継がれた波



Waves at Matsushima and Mount Fuji

松島・富士図屏風

Attributed to Ogata Kōrin (1658–1716)

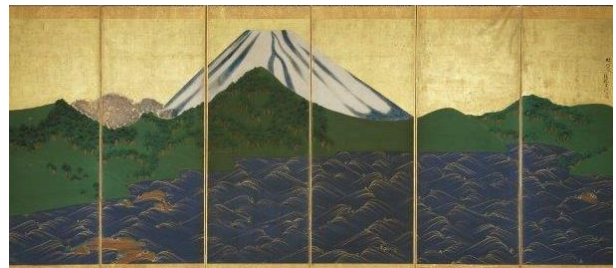
Japan, 1800s

Pair of six-panel folding screens

Ink, colors and gold on paper 144.8 x 349.3 cm (each)

Private Collection

Photo: Lisa Kato



Boats on the Sea

松島図屏風

Studio of Tawaraya Sōtatsu (act. ca. 1600–40)

Japan, mid-1600s

Pair of six-panel folding screens; ink, colors, gold, and silver on paper

153.67 x 359.09 cm (image)

Minneapolis Institute of Arts, Mary Griggs Burke Collection, Gift of the

Mary and Jackson Burke Foundation L2015.33.2.1-.2





Waves at Matsushima

松島図屏風

Ogata Kōrin (1658–1716)

Japan, early 1700s

Six-panel folding screen; ink, color, and gold on paper, 150.2 × 367.8 cm

Fenollosa-Weld Collection, Museum of Fine Arts Boston, 11.4584

Photo: © 2015 Museum of Fine Arts, Boston



Whose Sleeves?

誰が袖屏風

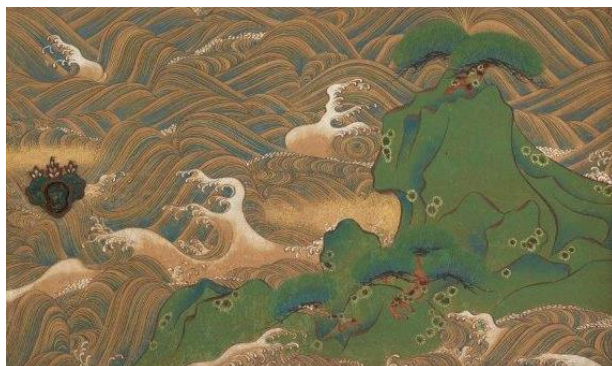
Japan, Edo period, 1700s

Pair of six-panel folding screens. Ink, colors, and gold on paper

175.8 × 369.9 cm (right)

175.7 × 369.7 cm (left)

Gift of Charles Lang Freer, Freer Gallery of Art, F1907.126-127



Waves at Matsushima

松島図小襖

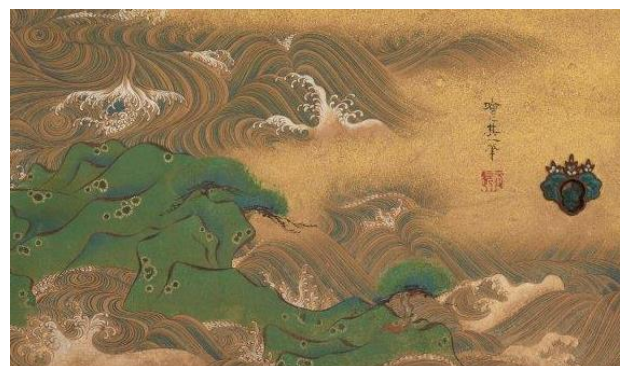
Suzuki Kiitsu (1796–1858)

Japan, ca. 1830

Pair of sliding-door panels (kobusuma); ink and colors on paper

24.1 × 40.7 cm (each)

Feinberg Collection





Kōrin hyakuzu kōhen

光琳百図 後編

Sakai Hōitsu (1761–1828)

Japan, Edo period, 1826 (Bunsei 9), 6th month Volume 2

Book; woodblock printed; ink on paper; paper covers

27 × 18.5 × 0.5 cm

Purchase—The Gerhard Pulverer Collection, Museum funds, Friends of the Freer and Sackler Galleries and the Harold P. Stern Memorial fund in appreciation of Jeffrey P. Cunard and his exemplary service to the Galleries as chair of the Board of Trustees (2003–2007)

Freer Gallery of Art, FSC-GR-780.476.2

REDISCOVERY 見直された宗達



Indian Corn Plants

唐蜀黍

Kobayashi Kokei (1883–1957)

Japan, 1939

Pair of two-panel folding screens; color on paper

167.6 × 181 cm (each, image)

National Museum of Modern Art, Tokyo, J00511





Flowing Fans

扇面流し

Yamaguchi Hōshun (1893–1971)

Japan, 1930 Two-panel folding screen, color on paper

168 x 170 cm (image)

JR Tokai Lifelong Learning Foundation

Hōshun Yamaguchi Memorial Hall



Cranes of Immortality

不老仙鶴図

Tsuji Kakō (1870–1931)

Japan, 1910s

Hanging scroll; color on silk, 125 x 49.6 cm (image)

Gift of Griffith and Patricia Way, in honor of the 75th Anniversary of the Seattle Art Museum, 2010.41.80

Photo: Eduardo Calderon



Waterfowl in Snow

雪中水禽図

Tsuji Kakō (1870–1931)

Japan, ca. 1918

Hanging scroll; ink, gofun, and colors on silk, 124.5 x 41 cm (image)

Gift of Griffith and Patricia Way, in honor of the 75th Anniversary of the Seattle Art Museum, 2010.41.23



Puppy

子犬

Kobayashi Kokei (1883–1957)

Japan, 1948

Hanging scroll; ink and colors on paper, 60 x 80.8 cm (image)

Private collection



Dragon and Tiger

竜虎図

Imamura Shikō (1880–1916)

Japan, 1913

Pair of hanging scrolls

124.8 x 41.4 cm (dragon)

125.0 x 41.4 cm (tiger)

The Museum of Modern Art, Saitama



Morning Dew

朝露

Hirafuku Hyakusui (1877–1933)

Japan, 1915

Pair of six-panel folding screens; color on silk

168.7 x 361.2 cm (each, image)

Sannomaru Shōzōkan, Museum of the Imperial Collections, Tokyo



The Gods of Wind and Thunder

風神雷神

Maeda Seison (1885–1977)

Japan, 1949

Painting; ink and color on paper, 196 x 107.3 cm (image)

Seki Art Gallery



Poppies

芥子園屏風

Maeda Seison (1885–1977)

Japan, 1930

Pair of six-panel folding screens; color on paper

168 x 365 cm (each, image)

Hikaru Museum

