

**MEDIA ONLY:** Allison Peck, 202.633.0447  
Ellie Reynolds, 202.633.0521  
[www.asia.si.edu/press](http://www.asia.si.edu/press)  
[pressasia@si.edu](mailto:pressasia@si.edu)

February 2014

## An American in London: Whistler and the Thames

May 3–August 17, 2014, Arthur M. Sackler Gallery

When the young American artist James McNeill Whistler (1834–1903) arrived in London in 1859, he embraced the river Thames and its environs as his particular subject. For the next twenty years he explored new ways of seeing the city and depicting what his friend, the French critic and poet Charles Baudelaire, called “the profound and complicated poetry of a vast capital.” The Sackler Gallery’s first international loan exhibition of works by Whistler features more than 80 paintings, prints, and rarely seen drawings, watercolors, and pastels of famed London sites and the Thames. The exhibition culminates with an ensemble of Whistler’s nocturnes, including the iconic “Blue and Gold–Old Battersea Bridge.”

**Images are for press and media use only.** Please call or e-mail the F|S Public Affairs and Marketing office at (202) 633-0271 or [pressAsia@si.edu](mailto:pressAsia@si.edu) for access to hi-res images for exhibitions or events.



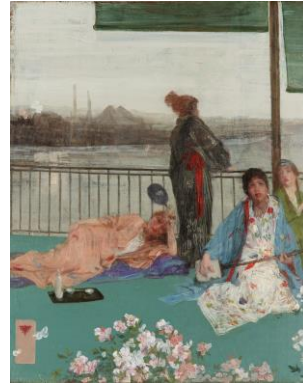
*Nocturne: Battersea Bridge*  
James McNeill Whistler  
1872–1873  
Pastel on brown paper  
H x W: 18.4 x 28.1 cm (7 1/4 x 11 1/16 in)  
Freer Gallery of Art, Gift of Charles Lang Freer, F1904.64a-c



*Brown and Silver: Old Battersea Bridge*  
James McNeill Whistler  
1859–1863  
Oil on canvas mounted on masonite  
H x W: 63.8 x 76 cm (25 1/8 x 29 15/16 in)  
Addison Gallery of American Art, Gift of Cornelius N. Bliss, 1928.55



*Old Battersea Bridge*  
James McNeill Whistler  
1879  
Etching on paper  
H x W: 20.1 x 29.5 cm (7 15/16 x 11 5/8 in)  
Freer Gallery of Art, Gift of Charles Lang Freer, F1898.370



*Variations in Flesh Colour and Green—The Balcony*  
James McNeill Whistler  
1864—1870; additions 1870—1879  
Oil on wood panel  
H x W: 61.4 x 48.8 cm (24 3/16 x 19 3/16 in)  
Freer Gallery of Art, Gift of Charles Lang Freer, F1892.23a-b



*Nocturne: Blue and Gold—Old Battersea Bridge*  
James McNeill Whistler  
ca. 1872—1875  
Oil on canvas  
H x W: 68.3 x 51.2 cm (26 7/8 x 20 3/16 in)  
©Tate, London 2013, Presented by The Art Fund, 1905



*Wapping*  
James McNeill Whistler  
1860—1861  
Oil on canvas  
H x W: 72.1 x 101.8 cm (28 3/8 x 40 1/16 in)  
National Gallery of Art, John Hay Whitney Collection



*Caprice in Purple and Gold: The Golden Screen*  
James McNeill Whistler  
1864  
Oil on wood panel  
H x W: 50.1 x 68.5 cm (19 3/4 x 26 15/16 in)  
Freer Gallery of Art, Gift of Charles Lang Freer, F1904.75a



*Chelsea in Ice*  
James McNeill Whistler  
1864  
Oil on canvas  
H x W: 18 x 24 cm (7 1/16 x 9 7/16 in)  
Colby College Museum of Art, The Lunder Collection



*Billingsgate*  
James McNeill Whistler  
1859  
Etching on paper  
H x W: 15.3 x 22.5 cm (6 x 8 7/8 in)  
Freer Gallery of Art, Gift of Charles Lang Freer, F1898.278



*The Tall Bridge*  
James McNeill Whistler  
1878  
Lithotint on paper  
H x W (overall): 27.6 x 18.1 cm (10 7/8 x 7 1/8 in)  
Freer Gallery of Art, Gift of Charles Lang Freer, F1888.22



*Eagle Wharf (Tyzac Whiteley and Co.)*  
James McNeill Whistler  
1859  
Etching on paper  
H x W: 13.8 x 21.4 cm (5 7/16 x 8 7/16 in)  
Freer Gallery of Art, Gift of Charles Lang Freer, F1898.270



*Thames Police*  
James McNeill Whistler  
1859  
Etching on paper  
H x W: 15.2 x 22.5 cm (6 x 8 7/8 in)  
Freer Gallery of Art, Gift of Charles Lang Freer, F1898.275



*Battersea Reach*  
James McNeill Whistler  
1863  
Oil on canvas  
H x W: 20 x 30 cm (7 7/8 x 11 13/16 in)  
Corcoran Gallery of Art, Washington, DC, Bequest of James Parmelee



*Grey and Silver: Old Battersea Reach*  
James McNeill Whistler  
1863  
Oil on canvas  
H x W: 50.8 x 68.6 cm (20 x 27 in)  
The Art Institute of Chicago, Gift of Honoré and Potter Palmer, 1922.449